

Therapeutic Area and Start Up or Asset Name	Description	Faculty or Institute	Partnered or Startup or Available	DISCOVERY	OPTIMISATION	PRECLINICAL	CLINICAL
Diabetes and Obesity							
Amyloid Modulators	New therapeutics for the treatment of type 2 diabetes	Biological Sciences	Available				
ERp44/Adiponectin	Cell-penetrating peptides that modulate oligomeric composition and secretion of HMW isoform of adiponectin	Biological Sciences	Available				
Lipidated CGRP Peptide Antagonists	A novel class of peptide therapeutics that block CGRP action and are modified to increase drug half-life	Chemical Sciences	Partnered				
Pramlintide Analogues	Lipidation as an approach to achieving a potent longer-acting pramlintide for diabetes (both type 1 and 2)	Chemical Sciences	Partnered				
Neurological							
Compound 606	Analogues programme for the regulation of human brain pericyte and glioma stem cell number	Chemical Science	Available				
5HT2A Receptor Antagonist	A selective 5HT2A receptor antagonist for the treatment of psychiatric disorders	Chemical Science	Start up				
Oncology							
Hypoxia-Activated Prodrugs	Checkpoint inhibitor combination therapy using hypoxia-activated prodrugs that can improve the outcome of checkpoint blockades	ACSRC	Partnered				
CSF-1 Inhibitor Program	Highly potent and selective CSF-1R inhibitors	ACSRC	Available				
FGFR Prodrugs	Hypoxia activated prodrug candidates to improve treatment of FGFR-amplified cancers	ACSRC	Available				
Culicinin D Analogues	Structural analogues of Culicinin D for use as an antibody-drug conjugate (ADC) to treat breast cancer	Chemical Sciences	Available				
Novel potent DNA alkylating agents	Novel potent DNA alkylating agents as warheads for arming antitumor antibodies (ADCs)	ACSRC	Available				
Development of DNA-PK inhibitors	Selective inhibitors of DNA-PK which are effective radiosensitisers and can be developed to have tumour targeting properties	ACSRC	Available				
Selective Kinase inhibitors	This platform enables the fast and efficient generation of novel analogues that have high selectivity and potency	ACSRC	Available				
Infectious Disease							
Lipidated Polymyxins Analogues	Analogues programme for MDR gram negative bacteria	Chemical Sciences	Available				
Ophthalmology							
Tonabersat	Methods for the treatment of disorders where modulation of a gap junction hemichannel may be of benefit	Medical Sciences	Partnered				
XG19	A cell penetrating peptide that blocks gap junction hemichannel function for treatment of ischaemic disease	Medical Sciences	Partnered				
Pachymatrix	Method of treatment of vision-impairment disease that features thinning and misshaping of the cornea such as keratoconus and myopia	Medical Sciences	Available				
Pain							
Local Anaesthetic Implants	A local anaesthetic implant containing non-opioid analgesic for post operative pain management	Pharmacy	Available				
Regenerative and Tissue Engineering							
Skin Engineering	Method and device for making full thickness, autologous skin	Biological Sciences	Available				
Crystallin Biomaterials	Crystallin biomaterials for ophthalmology and tissue engineering	CME	Available				
Tendon Repair	Rebuilding the tendon-bone interface with a combination growth factor approach	Medical Sciences	Available				
Kelch's Media	A cholera toxin-free alternative to Greens medium	Biological Sciences	Available				N/A

FIND OUT MORE: www.uniservices.co.nz/technology | innovation@uniservices.co.nz

CME: Chemical and Material Engineering **ACSRC:** Auckland Cancer Society Research Centre **NIHI:** The National Institute for Health Innovation

Will Charles
Executive Director - Biotech
w.charles@auckland.ac.nz

Evelyn Body
Director of Commercialisation - BioTech
e.body@auckland.ac.nz

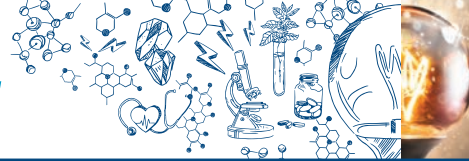
Kent Lee
Senior Commercialisation Manager - MedTech
kent.lee@auckland.ac.nz

Kimberlee Jordan
Senior Commercialisation Manager - BioTech
kimberlee.jordan@auckland.ac.nz

Sandhya Badrinarayanan
Commercialisation Manager - BioTech
s.badrinarayanan@auckland.ac.nz

uniservices+
IDEAS TO LIFE RANGAHAUA KIA WHAI HUA





Biotech Assets Name	Description/Field	Faculty or Institute	Partnered or Startup or Available	PROOF OF CONCEPT	PROTOTYPE	LEAD PRODUCT	IN MARKET
Vaccine and Drug Delivery Platforms							
CLipPA Technology	A unique linker unit between the cyclopeptide and fatty acid motifs through utilisation of our proprietary 'thiol---ene' chemistry	Chemical Sciences	Available				
SAPVAX	Self adjuvating vaccines	Chemical Sciences	Partnered				
Method For Protein Ligation	Intramolecular ester bonds as crosslinking agents for vaccine and biomolecular development	Biological Sciences	Available				
Devices, Diagnostics and Assays							
3D Heart Mapping	Real-time 3D heart mapping to guide ablation in the treatment of atrial fibrillation	Bioengineering	Available				
Toku Eyes	Ophthalmic imaging device and computational modelling platform to diagnose and monitor eye diseases	Bioengineering	Start up				
JunoFem	Wearable Pelvic floor pressure sensor and app to treat female stress urinary incontinence and pelvic organ prolapse	Bioengineering	Start up				
Rheumatic Fever Diagnostic	This technology improve the efficiency and accuracy of streptococcal serology by enabling a triplex assay to be conducted	Biological Sciences	Available				
Immune Cell Profiling	State-of-the-art immuno-monitoring assays using spectral flow cytometry	Biological Sciences	Available				
HeartLab	An AI-powered platform which assists cardiologists reporting echocardiograms.	Bioengineering	Start up				
Apercure Surgical	A percutaneous catheter fixation device	Surgery	Start up				
Pressure Vessel Sensor	Implantable pressure monitoring system for detection of physiological fluid changes in blood, brain and bladder	Bioengineering	Available				
AVASA	An implantable arterial coupler for surgical anastomosis	Surgery	Start up				
Surgical Canary	A medical device for the early detection of a leak from a gastrointestinal resection via extra-luminal colonic gas collection and sensing	Surgery	Available				
Digital Health							
Sparx	Game for managing adolescent depression	Medical Sciences	Available				
SCAMPI	Smoking cessation app for smokers	Medical Sciences	Available				
Horizon Health Weight Management Programme	A mobile health weight management plan suitable for use in an ethnically diverse population	NIHI	Available				
Integrated Platform for Tinnitus Treatment	An evidence-based system that treats multiple aspects of tinnitus using a mobile device	Medical Sciences	Available				

FIND OUT MORE: www.uniservices.co.nz/technology | innovation@uniservices.co.nz

NIHI: The National Institute for Health Innovation

Will Charles
Executive Director - Biotech
w.charles@auckland.ac.nz

Evelyn Body
Director of Commercialisation - BioTech
e.body@auckland.ac.nz

Kent Lee
Senior Commercialisation Manager - MedTech
kent.lee@auckland.ac.nz

Kimberlee Jordan
Senior Commercialisation Manager - BioTech
kimberlee.jordan@auckland.ac.nz

Sandhya Badrinarayanan
Commercialisation Manager - BioTech
s.badrinarayanan@auckland.ac.nz